

THIS INFORMATION AND
MATERIALS WERE CREATED AND
DISTRIBUTED BY THE
**ALMONT DOWNTOWN
DEVELOPMENT
AUTHORITY**

134 N. MAIN
(PO Box 226)
ALMONT, MI 48003
810.798.8125

WWW.ALMONTDDA.COM

[WWW.FACEBOOK.COM/](http://WWW.FACEBOOK.COM/DOWNTOWNALMONT)

DOWNTOWNALMONT

A SPECIAL WORD OF
APPRECIATION TO
**FOUR COUNTY
COMMUNITY
FOUNDATION**

FOR SUPPORTING THIS
EFFORT.

THANK YOU!



Four County

[community foundation](http://www.fourcountycommunityfoundation.org)



ALMONT_{DDA}

ALMONT HISTORICAL WALKING TOUR

VOLUME 1



WELCOME TO ALMONT



East side of Main Street from the North prior to 1894 fire.

About the Village of Almont...

Founded in 1833, Almont is the sixth oldest village in the State of Michigan. Originally called Newburg, the Village was incorporated in 1855 under their new name of Almont. The historic roots of this charming community create the foundation for a unique downtown. While numerous fires have devastated the landscape of the downtown throughout the late 19th and early 20th centuries – Almont has been able to preserve and maintain much of the architecture that has created the character of the community. Enjoy your visit and the stories that our downtown has to tell.



West side of Main Street from the south prior to 1894 fire.

101 South Main Street - Almont Fountain Park

In January 1992, a fire destroyed the building located at this location. The last business to operate at the southeast corner of St. Clair and Main Streets was Mollen's Antique Shop. The original structure was built during the 1850's and housed the Oven's Brothers boot and shoe store and later a



hardware. During the 1950 & 60's it operated as a grocery and in the 70's Carl's Village Mart. After the fire, the Almont Downtown Development Authority redeveloped this property into a community gathering space. You will often find community members relaxing on park benches and enjoying the fountain and seasonal plantings. The Catherine G. Leete water fountain was given to the Village of Almont by E. Leete as a memorial to his wife. She was the daughter of Oliver and Mary Goetchius of Almont. The marble fountain, one of Almont's most distinctive landmarks, is made of marble with a granite base and designed in a Greek motif.



ALMONT HISTORIC SITES

Research provided by members of:

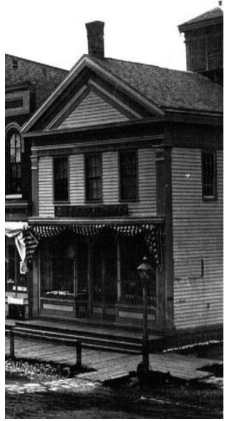
Almont Community Historical Society

149 South Main Street

P. O. Box 635

Almont, MI, 48003

***Meetings held the 2nd Monday
of every month at 7 p.m.***



102 South Main Street

The “Old Newburg” general store on the southwest corner of Main Street was originally built of logs and was the first store built for the selling of dry goods and groceries. Built in 1836, it was originally owned by Charles B. Keeler. In the fire of 1861 it was the only building on this side of the street that survived. The property was

used by the Townsend, Farquarson, and RL Taylor General Store. Over the years, Farquarson and Charles Ferguson ran the store and John Hopkins was the clerk. After Mr. Farquarson became ill, the business became the Taylor and Hopkins general store. It was sold to William Cochrane and in 1876 the first Cochrane’s Store was opened. It was



owned by the Cochrane family until they sold it in the 1960’s to the Chapotons who continued to operate it as a clothing store. In more recent years, this location has served as a flower shop, tattoo parlor, computer store and cyber café.



121 South Main Street

Graham John Terry, originally of England, was hired by Robert Thomas of Almont as a meat cutter in 1907. By 1925, he started his own business, Terry’s Meat Market, in the store just to the south of this location and in 1929 he purchased the land from Dr. Adam Price and built the existing building. He was joined by his wife, Iva Lockwood, and later son,

Graham, daughter-in-law and four grandchildren in the running of the business. After 46 years, the Terry family sold the building to Keith Myers and later it became the James L Smith Insurance Company. It is currently owned by attorney James Toth.



129 South Main Street



The original wooden structure at this location served as a barber shop owned by Mr. Crippin, and was later moved to 311 Branch Street. The current building was built in 1927 when local businessmen founded the first National Bank at this location. Difficult times plagued this business as it was caught up in the

“Bank Holiday” of 1932 and the years of the Great Depression. It eventually closed permanently. It has since served as a local bar and restaurant under several owners.



605 South Main Street

Built in 1882, the elevator and R.K. Farnum sawmill and flour mill has had a long history. Powered by

steam, the elevator also served as a station of the L.H. & N.W. Railroad. The business changed owners between Hart and Sullivan (early 1900’s), Frank Bishop (1911) and Russell and Mildred Lovell (1954). The current business,

Almont Country Corner acquired the property in 1973.



149 South Main Street Almont Community Historical Museum



This building originates from the mid 1800’s and is a one story wood frame building with clapboard siding and pitched roof. As it stands today, the building retains most of the original storefront façade. Fortunately, the building has undergone only minor alterations and a majority of the unique building features have changed very little over time. It remains one of the last remaining all wood structures on Main Street. Over the years, this building has served as a Post Office, law office, antique shop, children’s clothing store and private residence. Through the generous support of Richard Muir, it was kept in Almont after plans called for its removal to Crossroad’s Village in Flint. In 2010, the Almont DDA

completed an extensive remodel of the exterior of this building following the Department of Interior standards of historic preservation. Careful attention was taken to preserve the character of this building for future generations.



138 South Main Street

In 1861, R.L. Rutherford started his own butcher shop where the Muir Funeral Home stands today. The original building, owned by Mrs. Dodge, also

served as a millinery. The building was demolished during the devastating downtown fire later that year so that neighboring homes could be saved. Circa 1900, Fred Whitehead built the Almont Hotel at this location. Later, the building was converted into the Burley Hospital which operated until 1927

when Muir Brothers purchased it to use as a funeral home. A chest from the Almont Hotel can be found in the Almont Community Historical Museum.



622 South Main Street



Built in 1843 by Stephen Briggs as a carding and fulling mill for the processing of wool, the Mill has been a viable part of the community ever since. It

has passed through many hands; (Briggs, Gutches, Howland, King, Terry, Hough and Graves) from 1843 until 1991. William and Nora King owned the mill for approximately 54 year whereby it earned the longstanding name of “King’s Mill.”

The property was bought by the present owners in 1991 and serves as an antique and home décor shop and coffee house.

