

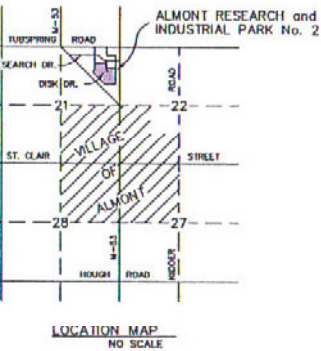
ALMONT RESEARCH and INDUSTRIAL PARK No. 2

PART OF THE NORTHEAST 1/4 OF SECTION 21,
T06N-R12E, VILLAGE OF ALMONT, LAPEER COUNTY, MICHIGAN

CURVE DATA			
CURVE	RADIUS	CENTRAL ANGLE	ARC LENGTH
A	317.00'	38°28'08"	212.85'
B	30.00'	84°51'15"	47.87'
C	70.00'	271°37'36"	331.86'
D	50.00'	42°03'11"	35.13'
E	383.00'	42°08'03"	281.85'

LEGEND

ALL DIMENSIONS ARE IN FEET.
MONUMENTS, CONSISTING OF STEEL RODS, OF DIAMETER AND 36 INCHES IN LENGTH WITH ENDS ENCASED IN CONCRETE CYLINDERS, 4 INCHES DIAMETER WITH A 1/2 INCH STEEL ROD, 36 INCHES IN LENGTH, HAVE BEEN PLACED AND SHOWN BY SYMBOL "O".
SET 1/2 INCH STEEL ROD, 18 INCHES IN LENGTH, AT ALL LOT CORNERS.
"C" INDICATES FOUND CONCRETE MONUMENT DIAMETER WITH A 1/2 INCH STEEL ROD.
ALL CURVILINEAR DIMENSIONS ARE ARC LENGTHS.
"NR" INDICATES NON-RADIAL LINE.
BEARINGS AS SHOWN ARE REFERENCED TO THE PLAT OF ALMONT RESEARCH AND INDUSTRIAL PARK RECORDED IN LIBER 7 OF PLATS, PAGE 173.



DEED'S CERTIFICATE:

I, L. BROWN, PROFESSIONAL SURVEYOR, CERTIFY: THAT I HAVE SURVEYED, DIVIDED, AND MAPPED THE LAND DESCRIBED AS FOLLOWS: ALMONT RESEARCH AND INDUSTRIAL PARK No. 2, PART OF THE NORTHEAST 1/4 OF SECTION 21, T06N-R12E, VILLAGE OF ALMONT, LAPEER COUNTY, MICHIGAN, MORE PARTICULARLY AS COMMENCING AT THE EAST 1/4 CORNER OF SECTION 21, T06N-R12E, VILLAGE OF ALMONT, LAPEER COUNTY, MICHIGAN, TO THE POINT OF BEGINNING; THENCE NORTH 19°00'00" EAST, 338.98 FEET ALONG THE EAST LINE OF SAID SECTION 21; THENCE NORTH 17°00'00" WEST, 207.27 FEET, ALONG THE SOUTH LINE OF LOT 20, BARNES ACRES, AS SHOWN IN LIBER 3 OF PLATS ON PAGE 32 OF LAPEER COUNTY RECORDS; THENCE NORTH 11°49'18.88" EAST, 18.88 FEET; THENCE NORTH 04°37'00" WEST, 200.30 FEET, ALONG THE SOUTH LINE OF LOT 8 OF PLAT OF ALMONT RESEARCH AND INDUSTRIAL PARK, AS SHOWN IN LIBER 7 OF PLATS ON PAGES 173 OF LAPEER COUNTY RECORDS; THENCE NORTH 19°00'00" WEST, 207.27 FEET, ALONG THE EAST LINE OF SAID SECTION 21; THENCE ALONG A CURVE TO THE LEFT, LONG CHORD BEARING - 57°50'48" EAST, 66.79 FEET, RADIUS 418.00 FEET, CHORD LENGTH = 66.79 FEET, CENTRAL ANGLE = 09°09'55" WEST, RADIUS = 418.00 FEET, ALONG THE SOUTHERLY LINE OF LOT 8 OF SAID PLAT OF ALMONT RESEARCH AND INDUSTRIAL PARK; THENCE SOUTH 50°19'00" WEST, 489.70 FEET, ALONG THE WEST LINE OF LOT 9 OF SAID PLAT OF ALMONT RESEARCH AND INDUSTRIAL PARK; THENCE SOUTH 55°00'00" WEST, 535.00 FEET ALONG THE SOUTH LINE OF SAID SECTION 21; THENCE SOUTH 19°00'00" WEST, 739.00 FEET, ALONG THE WEST LINE OF BARNES ACRES NO. 2, AS SHOWN IN LIBER 4 OF PLATS ON PAGE 18 OF LAPEER COUNTY RECORDS, TO THE POINT OF BEGINNING. THIS PLAT CONTAINS 8 LOTS NUMBERED SEPARATELY FROM 11 TO 18, INCLUSIVE.

I HAVE MADE SUCH A SURVEY, LAND DIVISION AND PLAT BY THE ORDER OF THE OWNERS OF SUCH LAND.

THAT A PLAT IS A CORRECT REPRESENTATION OF ALL THE EXTERIOR BOUNDARIES OF THE LAND SURVEYED AND THE DIVISION OF IT.

THAT ALL REQUIRED MONUMENTS AND LOT MARKERS HAVE BEEN LOCATED AND PLACED ON THAT SURVEY HAS BEEN DEPOSITED WITH THE COUNTY CLERK, AS REQUIRED BY SECTION 125 OF THE ACT.

THAT THE ACCURACY OF THE SURVEY IS WITHIN THE LIMITS REQUIRED BY SECTION 126 OF THE ACT.

THAT THE BEARINGS SHOWN ON THE PLAT ARE EXPRESSED AS REQUIRED BY SECTION 126(3) OF THE ACT AND AS EXPLAINED IN THE LEGEND.

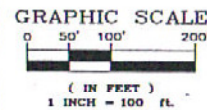
HURON SURVEYING
255 E. HURON AVENUE
BAD AXE, MICHIGAN 48413

RUSSELL L. BROWN
P.S. #24588

LONG CHORD
BEARING = 57°50'48"E
CHORD LENGTH = 66.79'
ARC LENGTH = 66.79'
CENTRAL ANGLE = 09°09'55"
RADIUS = 418.00'

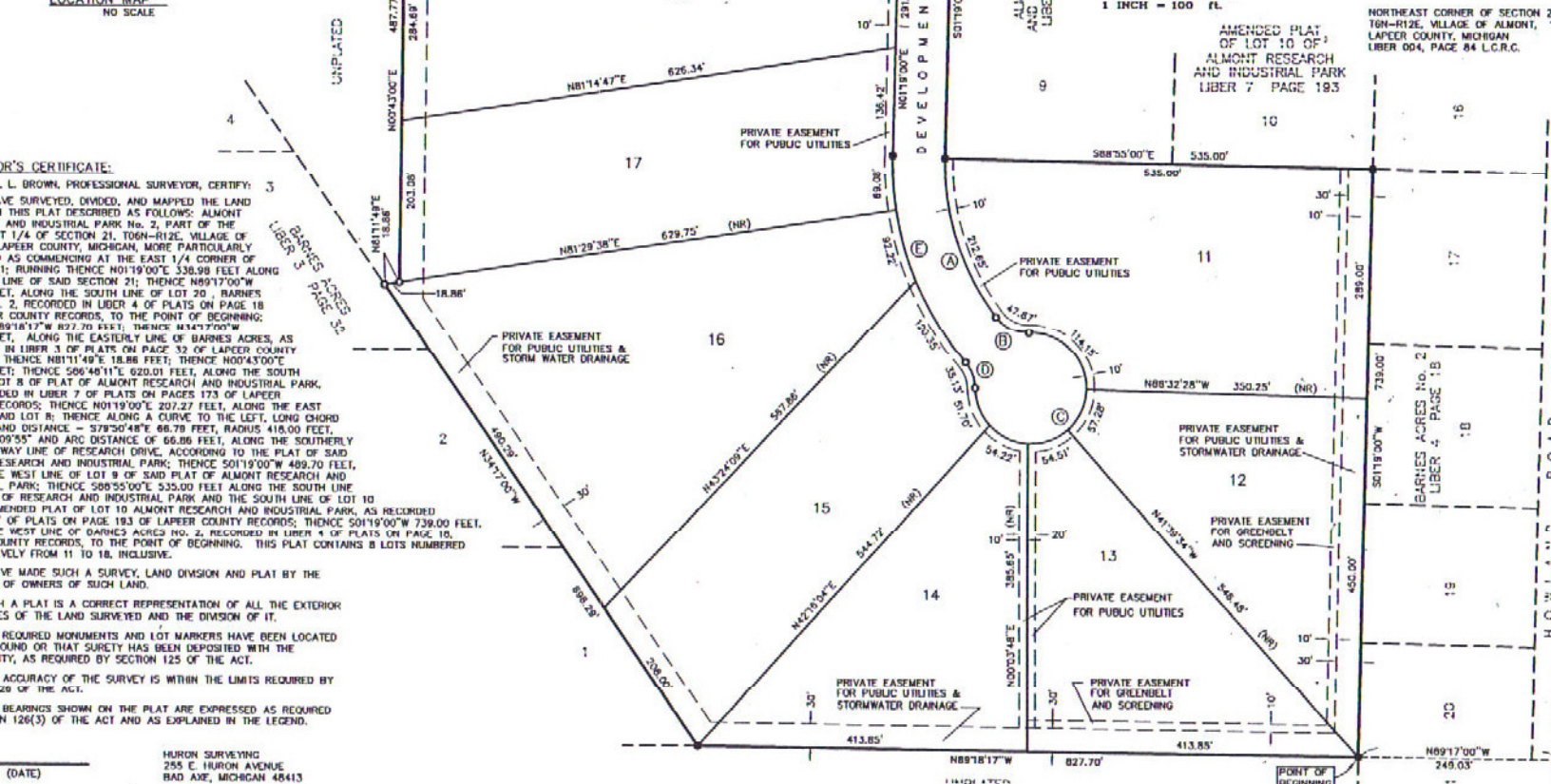
RESEARCH DRIVE
9' WIDE

ALMONT RESEARCH & INDUSTRIAL PARK
LIBER 7 PAGE 173



AMENDED PLAT
OF LOT 10 OF
ALMONT RESEARCH
AND INDUSTRIAL PARK
LIBER 7 PAGE 183

NORTHEAST CORNER OF SECTION 21,
T06N-R12E, VILLAGE OF ALMONT,
LAPEER COUNTY, MICHIGAN
LIBER 004, PAGE 84 L.C.R.C.



EAST 1/4 CORNER OF SEC. 21,
T06N-R12E, VILLAGE OF ALMONT,
LAPEER COUNTY, MICHIGAN
LIBER 004, PAGE 84 L.C.R.C.